

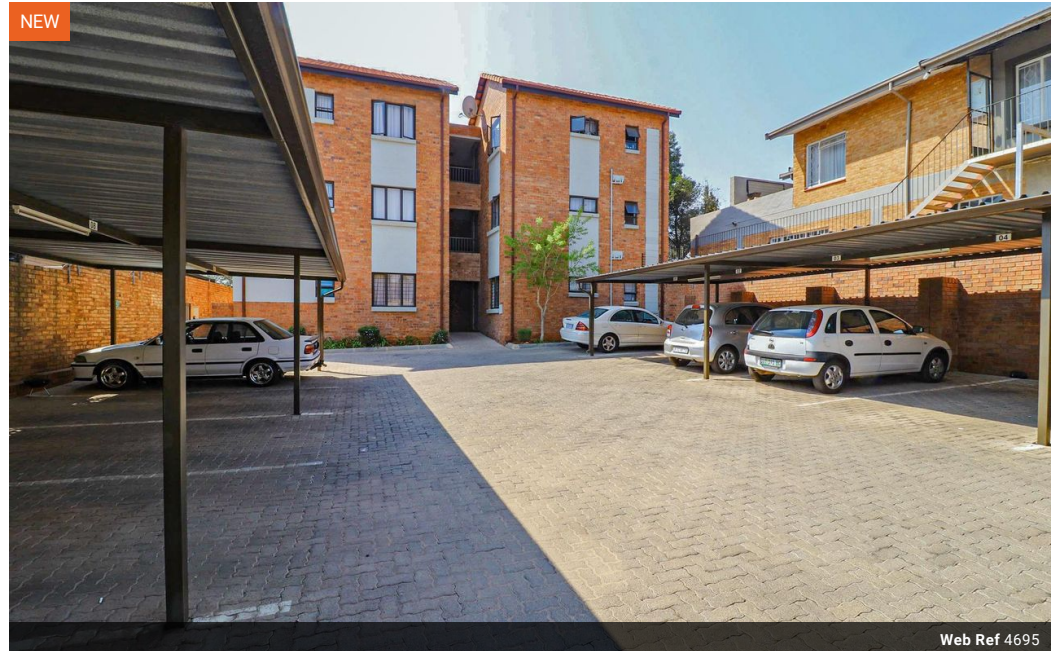


Collin Van Der Westhuizen
079 327 8332
collinvdw@renico.co.za

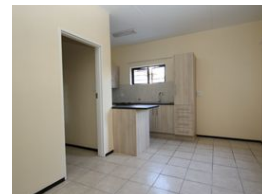
Contact Renico Construction

011 794 1177

384 Johan Road
Cnr Taylor Road
Honeydew.
2040



Web Ref 4695



R5,350 pm

 1  1

Lease Period 12 months

Annual Escalation -

Lease Excludes:

Pre-Paid Electricity

Metered Water

R290 Sewer Charge

R75 Refuse Charge

Availability 01 Jun 2025

Deposit R6,850

Secure apartment in Floracliffe

Upstairs 1 bed apartment available within the Mill Hill security complex in Floracliffe, Roodepoort. The 12 unit complex offers good security, 24 hour access control and covered parking for all vehicles. The fully tiled unit offers a bedroom with ample built in cupboards, bathroom, lounge area and modern kitchen. The unit is fitted with security gates and a pre-paid electricity meter. The complex offers a communal DSTV dish point to each apartment. Easy access to Ontdekkers Road and the 14th Avenue/ N1 interchange is an added bonus.

Features

Interior

Bedrooms	1
Bathrooms	1
Kitchens	1
Recep. Rooms	1
Furnished	No

Exterior

Carports / Parkings	1
Security	No
Pool	No
Views	False

Sizes

Floor Size	40m²
------------	------

