



Collin Van Der Westhuizen
079 327 8332
collinvdw@renico.co.za

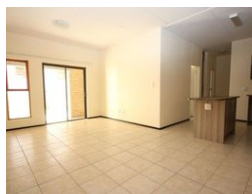
Contact Renico Construction

011 794 1177

384 Johan Road
Cnr Taylor Road
Honeydew.
2040



Web Ref 4747



R7,950 pm

 2  2

Lease Period 12 months

Availability 01 Sep 2025

Deposit R15,900

Annual Escalation -

Lease Excludes:

Pre-paid electricity and monthly water charges

Sewer

Security Levy

First Floor unit in Manor Park

Occupy this neat and sunny first floor apartment within Manor Park at the end of the month. The fully tiled unit offers 2 bedrooms, 2 bathrooms with main en suite, modern kitchen with breakfast nook, tiled lounge and dining room area and a small balcony leading from the sliding door. The unit is fitted with a pre-paid electricity and water meter system. The water for the unit is heated with energy saving industrial heat pumps. The complex is conveniently situated with easy access to Beyers Naude and Witkoppen Drive.

Features

Interior

Bedrooms	2
Bathrooms	2
Kitchens	1
Recep. Rooms	1.5
Furnished	No

Exterior

Carports / Parkings	1
Security	Yes
Pool	No
Views	False

Sizes

Floor Size	75m²
------------	------

