



**Collin Van Der Westhuizen**  
079 327 8332  
collinvdw@renico.co.za

Contact Renico Construction

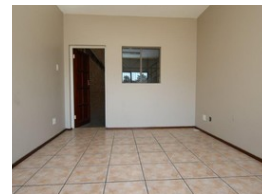
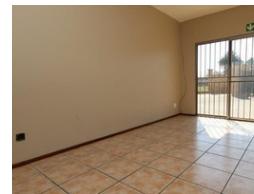
011 794 1177

384 Johan Road  
Cnr Taylor Road  
Honeydew.  
2040

## 279m<sup>2</sup> Mini Factory To Let in Stormill




Web Ref CL585



R11,160 pm

Gross Monthly Rental R11,160 Excl. VAT

 0  5

### Neat mini warehouse in Stormill

Available premises within the popular Stormill Industrial Estate situated just off Main Reef Road. Perfect for a small manufacturing or distribution business with the bulk of square meters taken up by the warehouse component. A small reception and office area

### Features

**Zoning** Industrial

#### Interior

Floor Loading Cap. 5 Tn/m<sup>2</sup>  
Power 3 Phase Yes  
Power Amps 60

#### Exterior

Security Yes  
Open Parking Bays 5

#### Sizes

Floor Size 279m<sup>2</sup>  
Building Height 5m

