



**Collin Van Der Westhuizen**  
079 327 8332  
collinvdw@renico.co.za

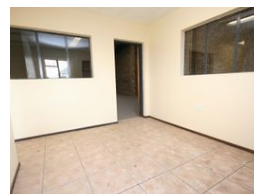
Contact Renico Construction

011 794 1177

384 Johan Road  
Cnr Taylor Road  
Honeydew.  
2040




Web Ref 591



**R5,880 pm**

**Gross Monthly Rental** R5,880 Excl. VAT

 0  6

## Mini Unit Within the Aureus Industrial Estate

One of the last available mini- units within the very popular Aureus Industrial Estate on the outskirts of the Randfontein CBD. The well-kept estate offers 24 hour security and access control and the unit comprise of a tiled reception area with office, kitchenette and ablutions. The warehouse area which is easily accessed by a high-opening roller shutter door has power floated concrete floor

## Features

**Zoning** Industrial

### Interior

Floor Loading Cap.	5 Tn/m <sup>2</sup>
Power 3 Phase	Yes
Power Amps	60

### Exterior

Security	Yes
Open Parking Bays	6

### Sizes

Floor Size	120m <sup>2</sup>
Land Size	160m <sup>2</sup>
Building Height	5m

